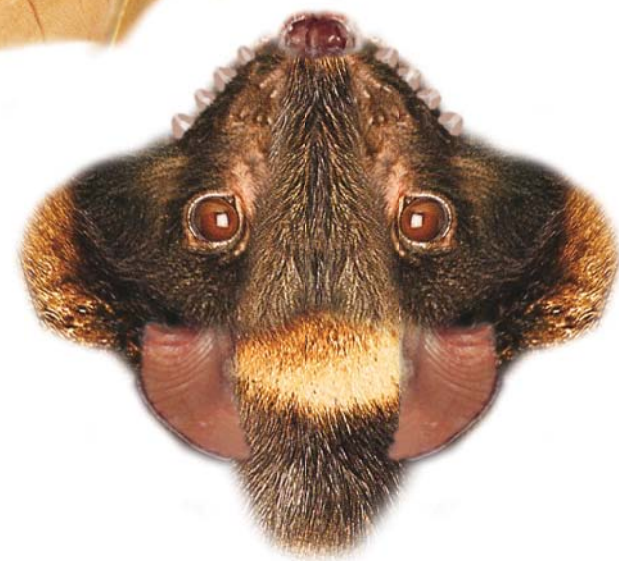
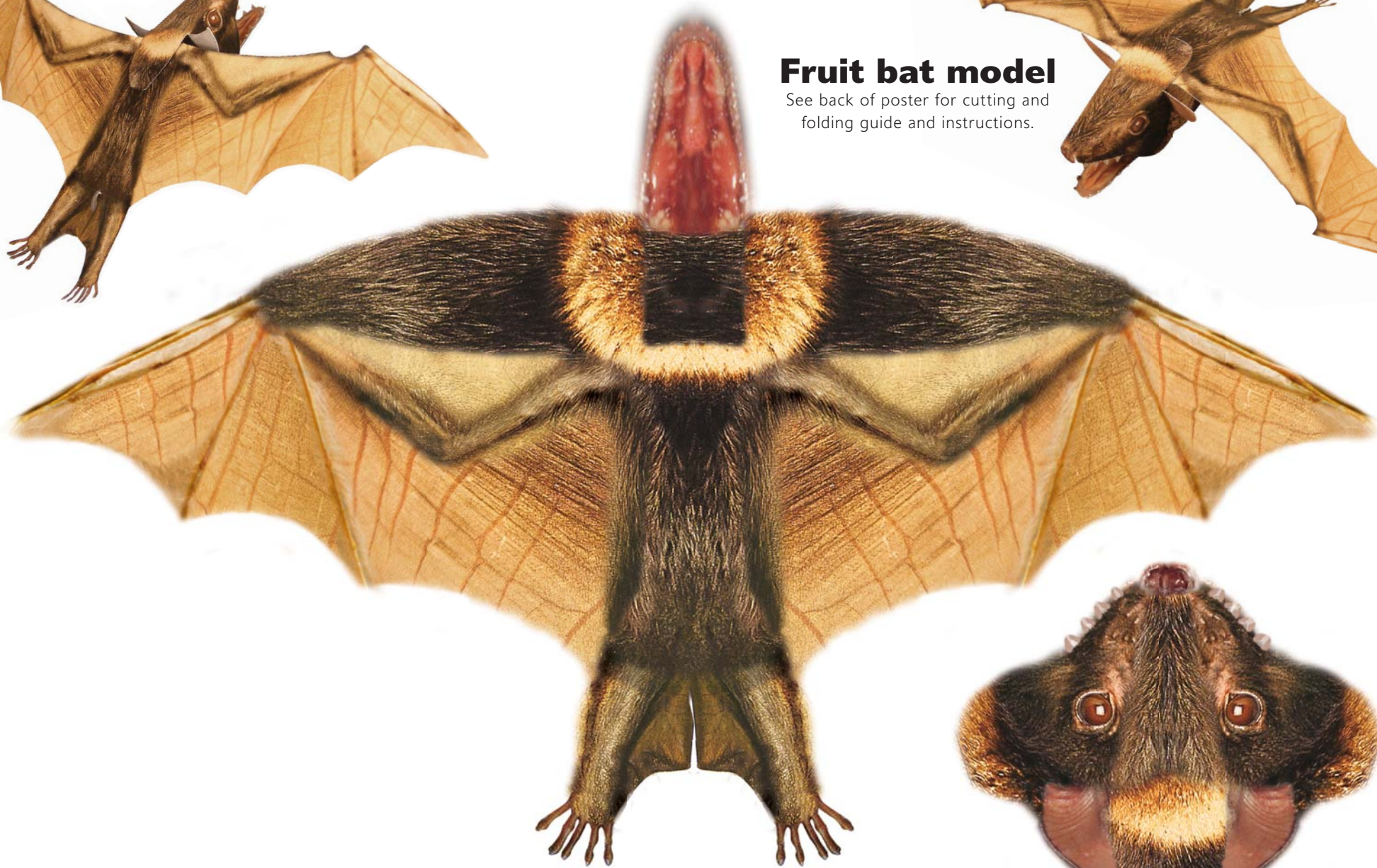




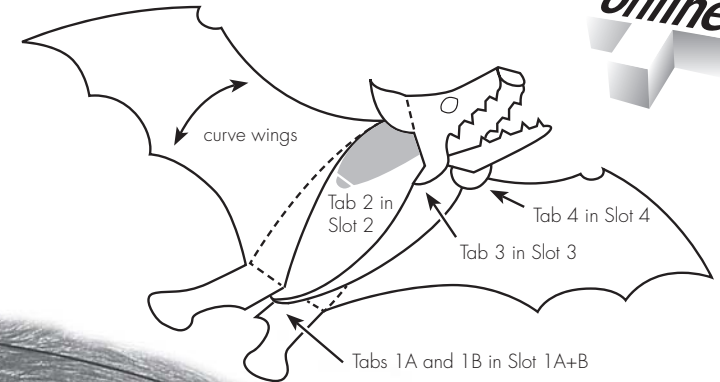
Fruit bat model

See back of poster for cutting and folding guide and instructions.

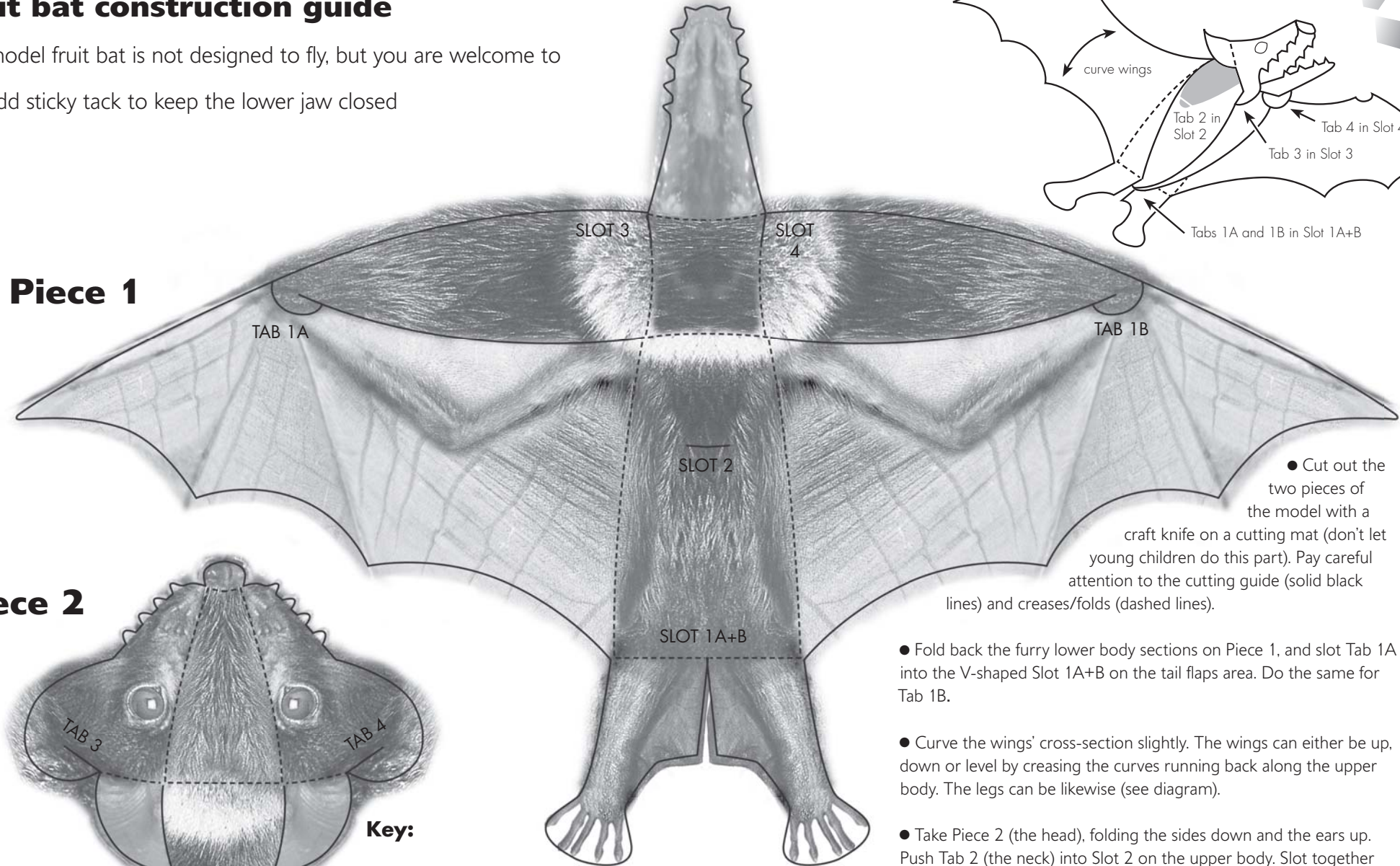


Fruit bat construction guide

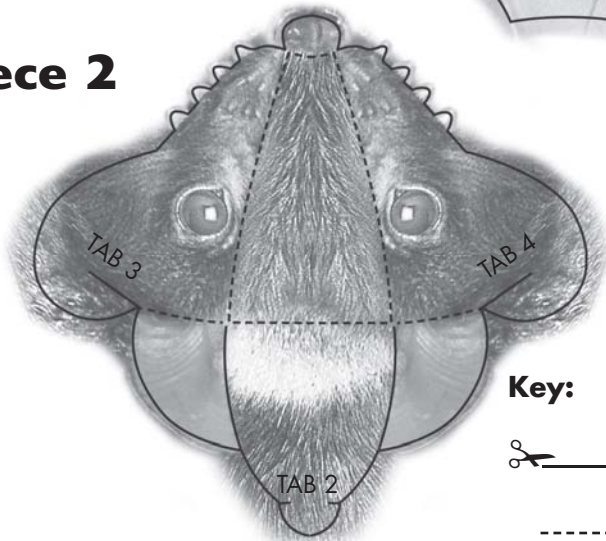
This model fruit bat is not designed to fly, but you are welcome to try! Add sticky tack to keep the lower jaw closed



Piece 1



Piece 2



Key:

———— cut out

----- crease and fold

● Cut out the two pieces of the model with a craft knife on a cutting mat (don't let young children do this part). Pay careful attention to the cutting guide (solid black lines) and creases/folds (dashed lines).

● Fold back the furry lower body sections on Piece 1, and slot Tab 1A into the V-shaped Slot 1A+B on the tail flaps area. Do the same for Tab 1B.

● Curve the wings' cross-section slightly. The wings can either be up, down or level by creating the curves running back along the upper body. The legs can be likewise (see diagram).

● Take Piece 2 (the head), folding the sides down and the ears up. Push Tab 2 (the neck) into Slot 2 on the upper body. Slot together Tab 3 into Slot 3 and Tab 4 into Slot 4 on the throat. Fold up the lower jaw and fold up the teeth on it. Look at the artist-impression photographs on the colour side of the poster for any final details.

MODELS, PHOTOGRAPHS AND INSTRUCTIONS BY DAVID MURRAY